

MAL 4043

Gas Metal Arc (MIG) Welding Wire - Aluminium Alloys

Standards

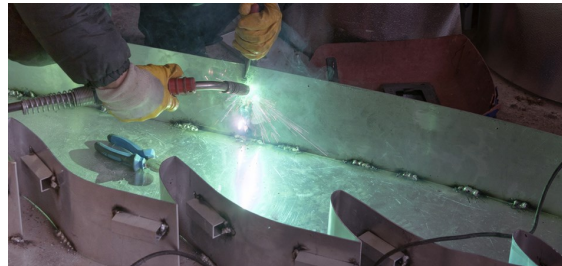
AWS/ASME SFA - 5.10	ER4043
EN ISO 18273	S Al 4043 (AlSi5)
TS 6204 EN ISO 18273	S Al 4043 (AlSi5)
DIN M. No.	3.2245

Materials

DIN	Material
G-AlSi 5 Mg	3.2341
AlMgSi 0,5	3.3206
AlMgSi 0,7	3.3210
AlMgSi 0,8	3.2316
AlMgSi 1	3.2315
AlMg 1 Si Cu	3.3211
AlMn 1	3.0515
Al 99.0	3.0205
Al 99.5	3.0255
Al Zn 4.5 Mg 1	3.4335
G - Al Si 6 Cu 4	3.2151
G - Al Si 5 Mg	3.2341

Properties and Applications

5% Silicon containing aluminium wire electrode for GMA (MIG) welding of aluminium and aluminium alloys. Suitable for welding aluminium casting, containing up to 7% silicon and Al-Mg-Si alloys which are containing up to 2% Magnesium alloying element.



Typical Chemical Features of the Welding Wire

Type of Analysis	Si	Mn	Al
Welding Wire	5.00	0.05	94.95

Typical Mechanical Values of Weld Metal

Test Condition	Protection Gas	Tensile Strength (N/mm ²)	% 0,2 Yield Strength (N/mm ²)	Elongation A5 (%)
As welded	I1	160	80	9

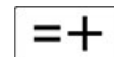
* Chemical composition and mechanical properties are valid when using shielding gas EN ISO 14175 - I1 (%100 Ar) .

Application Information

Welding Positions



Polarity:



Protection Gas:

I3 I1 I2

Welding Parameters & Efficiency

Diameter (mm)	
	0.80
	1.00
	1.20
	1.60
	2.00

Packaging Information

Product Code	Diameter (mm)	Quantity per Box	Box Gross Weight (kg)	Boxes per Outer Box	Outer Box Gross Weight (kg)	Packaging Type
24001BJAM2	0.80	7 kg	7.10	1	7.10	Wire Basket Spool (K300MS)
24001BJAM5	0.80	7 kg	7.60	1	7.60	Wire Basket Spool (K300MS)
24001DJAM5	1.00	7 kg	7.60	1	7.60	Wire Basket Spool (K300MS)
24001EJAM2	1.20	7 kg	7.10	1	7.10	Wire Basket Spool (K300MS)
24001EJAM5	1.20	7 kg	7.60	1	7.60	Wire Basket Spool (K300MS)
24001GJAM5	1.60	7 kg	7.60	1	7.60	Wire Basket Spool (K300MS)
24001HJAM2	2.00	7 kg	7.10	1	7.10	Wire Basket Spool (K300MS)

Storage & Re-Drying Information

Shouldn't be exposed to high statical load and impact.
 It should be stored in a dry room (relative humidity < 50%, room temperature > 20°C) on wooden pallets.