

Digital Elite™ Series

Auto-Darkening Welding Helmets

Welding Safety and Health 

Quick Specs

Viewing Area

9.22 sq. in. (59.48 sq. cm)

Operating Modes

Weld, cut, grind and X-Mode™

Shades

Weld: 8–13

Cut: 5–8

Sensors 4

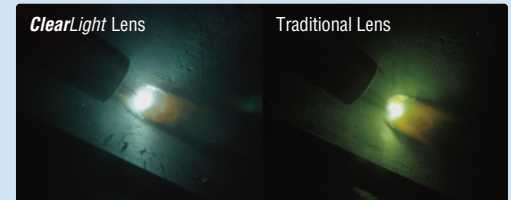
TIG Rating 5 amps and below

Switching Speed 1/20,000 second

Weight 18 oz. (510 g)



Optional helmet lighting accessory kit includes two lights (one for each side) and all required mounting hardware.



ClearLight™ Lens Technology optimizes contrast and clarity in welding and light states. 1/1/1/2 optical clarity rating allows for a lighter light state while not welding — keeping the helmet down between welds while within arm's reach of the workpiece.

Four arc sensors and four modes: weld, cut, grind and X-Mode. X-Mode electromagnetically senses the weld to eliminate sunlight interference and continuously detects the arc even if sensors are blocked.

Gen 3.5 headgear with comfort cushion has an ergonomic design that provides extensive adjustability, settings, and enhanced support.



Digital controls easily allow welder to adjust shade, delay and sensitivity.



AutoSense™ eliminates issues related to setting helmet sensitivity by allowing the welder to push and hold the AutoSense button to automatically set the helmet sensitivity for their environment.

Auto-on/off power control triggers lens at the strike of an arc.

Meets ANSI Z87.1+, CSA and CE standards.



Auto-darkening lens is warrantied for three years.



Miller Electric Mfg. LLC
An ITW Welding Company
1635 West Spencer Street
P.O. Box 1079
Appleton, WI 54912-1079 USA

Equipment Sales US and Canada
Phone: 866-931-9730
FAX: 800-637-2315
International Phone: 920-735-4554
International FAX: 920-735-4125

MillerWelds.com




Design Options



NEW!

**Gear Box™
281009**



**Lucky's
Speed Shop™
281001**



CAT
Cat® Edition 1
281006



©2020 Caterpillar.
CAT, CATERPILLAR and
their design marks are
registered trademarks of
Caterpillar, Miller Electric
Mfg. LLC is a licensee of
Caterpillar Inc.



**Stars and
Stripes™ III
281002**



**Inferno™
281003**



**Vintage
Roadster™
281004**



**Raptor™
281007**



**Black
281000**

Ordering Information

Auto-Darkening Welding Helmets	Stock No.	Description	Qty.	Price
Digital Elite™ Series		See above		
Consumables				
Helmet Battery, CR2450	217043			
Helmet Cover Lens, Outside	216326 / 216326B	5 pack or 50 pack (bulk)		
Helmet Cover Lens, Inside	216327 / 216327B	5 pack or 50 pack (bulk)		
Replacement Parts/Accessories				
ClearLight™ Auto-Darkening Lens	280056 280059	For Elite helmets (except Cat Edition 1) For Cat Edition 1 helmet		
Gen 3.5 Headgear	284218			
Helmet Bib	253882			
Slotted Hard Hat Adapter	259637	Compatible with most slotted hard hats		
Hard Hat Adapter	222003	Compatible with Fibre Metal and MSA hats		
Helmet Hook	251018			
Helmet Lighting Accessory Kit	282013			

Date:

Total Quoted Price:

Distributed by:

